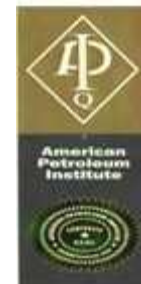


Sueeraa Alloys Global Pvt Ltd



“One stop sourcing point for all your needs”

- High quality steel castings(Sand)
- Investment castings
- Gravity Die Casting(GDC)
- Replicast Process
- Machining, Assembly & Testing
- Ware house facility – Italy



Location – SAGPL



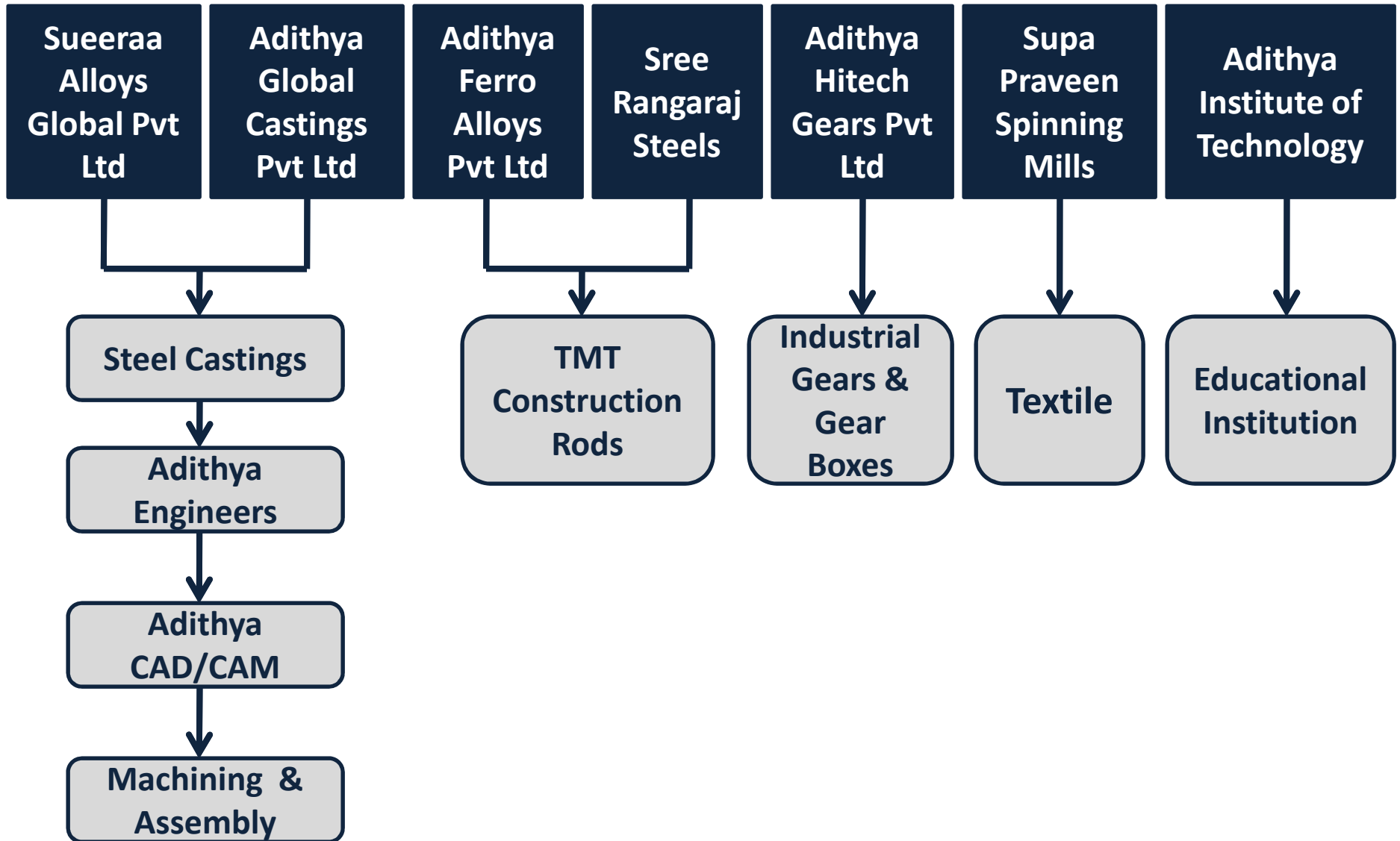
- SAGPL is situated in the industrial city in Coimbatore in southern India (25 Kilometers away from local airport).
- The City has good accessibility through road, rail and air with the rest of India and the world.
- The city has International flights connecting Singapore, Colombo and Sharjah.
- The nearest ocean ports are cochin (220 Km), Tuticorin (350 Km) and Chennai (505 Km) by road from Coimbatore.
- Coimbatore has an inland container depot as well.

Why SAGPL ?

- **Our commitment towards Customer Delight has enabled us to become one of the leading manufacturers of a wide range of valves and steel castings. Some of the other reasons which made us gain a high reputation in the national and international market are:**
- **Extensive industrial experience**
- **Customer-centric approach**
- **Impeccable quality**
- **Ethical business practices**
- **State-of-the-art infrastructure**
- **Efficient workforce**
- **Cost-competitiveness**
- **Integrated facility – Sand casting/Investment /Foam Casting/Machining.**
- **Timely delivery**



SUEERAA GROUP





GROUP - GROWTH PATH



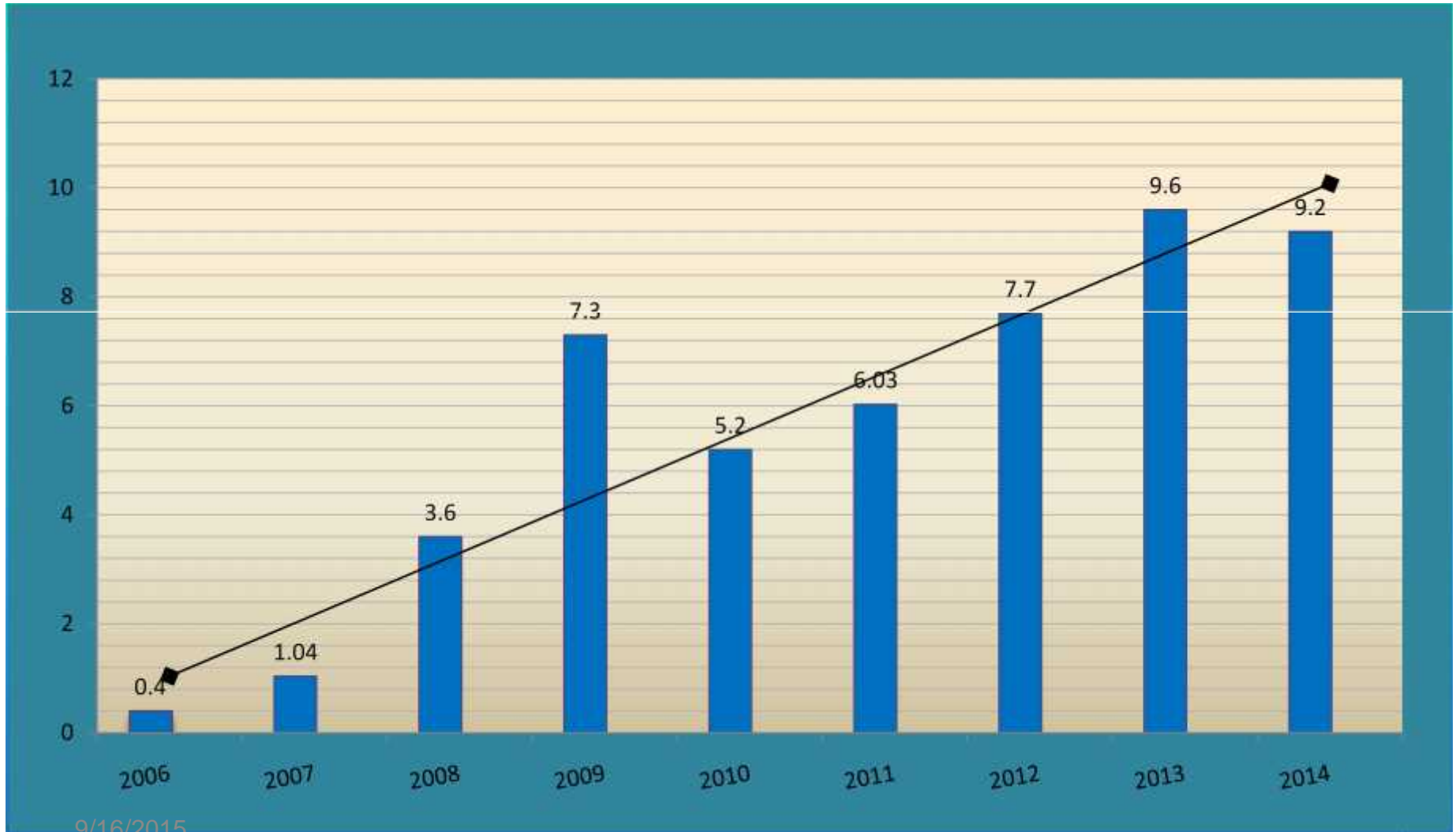
- **SupaPraveen Spinning Mills Private Ltd** was started in 1994 ,manufacturer of Cotton Yarn.
- **Adithya Ferro Alloys Pvt Ltd** was started in the year 1998, manufacturer of TMT Construction rods.
- **SAGPL** was started in the year 1998 as Steel casting foundry.
- **Adithya Engineers** was started in 2000 as Machine shop with heavy conventional machining centre.
- **Adithya Cad/ Cam Private Limited** was started in 2002 as machine shop with CNC machines & hydro testing facilities.
- **Adithya Institute of Technology** was started in 2008 ,an Engineering Institution where more than 1500 students & 150 faculty employed.
- **Adithya High tech Gears Pvt Ltd** was started in the year 2010,manufacturer of Industrial gear boxes & gears.
- **Adithya Global Castings Pvt Ltd** was started in the year 2013 as Steel Casting foundry.
- **Sri Rangaraj Steels** was started in the year 2013, manufacturer of TMT Construction rods.

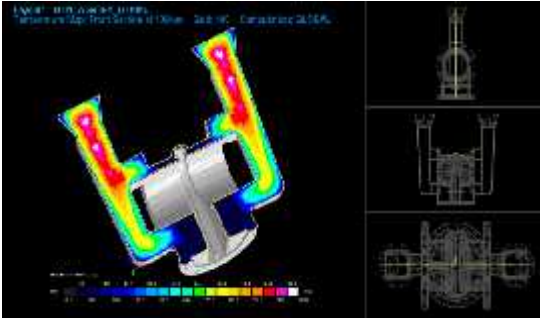


9/16/2015



SAGPL – EXPORT TURNOVER IN MILLION EUROS





PATTERN SHOP



SAGPL Patternshop features highly trained pattern makers from the simple to the extremely complex casting design.

Our patterns ensure accurate casting that meets customer specifications.
CNC machined patterns provide close & consistent casting tolerances.

The Patternshop is strengthened with solid models and Simulation software **SOFT CAST 3.5 for methoding**.

We SAGPL handle 6,500 active patterns.



FOUNDRY PROCESS & CAPACITY- SAND CASTING

STEEL CASTINGS:

Our Steel Casting foundry have maintained a state-of-the-art Foundry including ,

- In-house pattern shop,
- Modern machine shop and Testing ,
- In-house facility backed by Generator,
- Wind Power

PROCESS :

MOULDING - Sodium Silicate / CO₂ & No-bake
CORE MAKING - Sodium Silicate / CO₂
Shell Process
No-Bake



MONTHLY CAPACITY :

SAGPL 1 - 500TONS MAX. CASTING WEIGHT RANGE : 3000KGS = 6615LBS

SAGPL 2- 300 TONS MAX .CASTING WEIGHT RANGE : 1600 KGS = 3529 LBS

FOUNDRY PROCESS & CAPACITY - INVESTMENT CASTING



Wax Pattern Shop:

Centralized air conditioned and well equipped Wax preparation with fully automatic wax injection presses.

Shell Room:

Centralized air conditioned Unit & Dehumidifier for control of Temperature & Humidity in the entire Ceramic Coating & drying area.

Indigenous Ceramic coating technology for better quality of ceramic shell strength & better surface finish of castings.

De-Waxing :

Autoclave & Boiler unit.

Sintering Furnace Capacity: 1 Ton



Melting :

We have one 100kg and two 250kg induction furnaces with automatic conveyer system to give sufficient cooling time for shells after melting.

Installed Capacity : 50 tons/month

Size Range : We can produce components weighing from 1kg-50kg

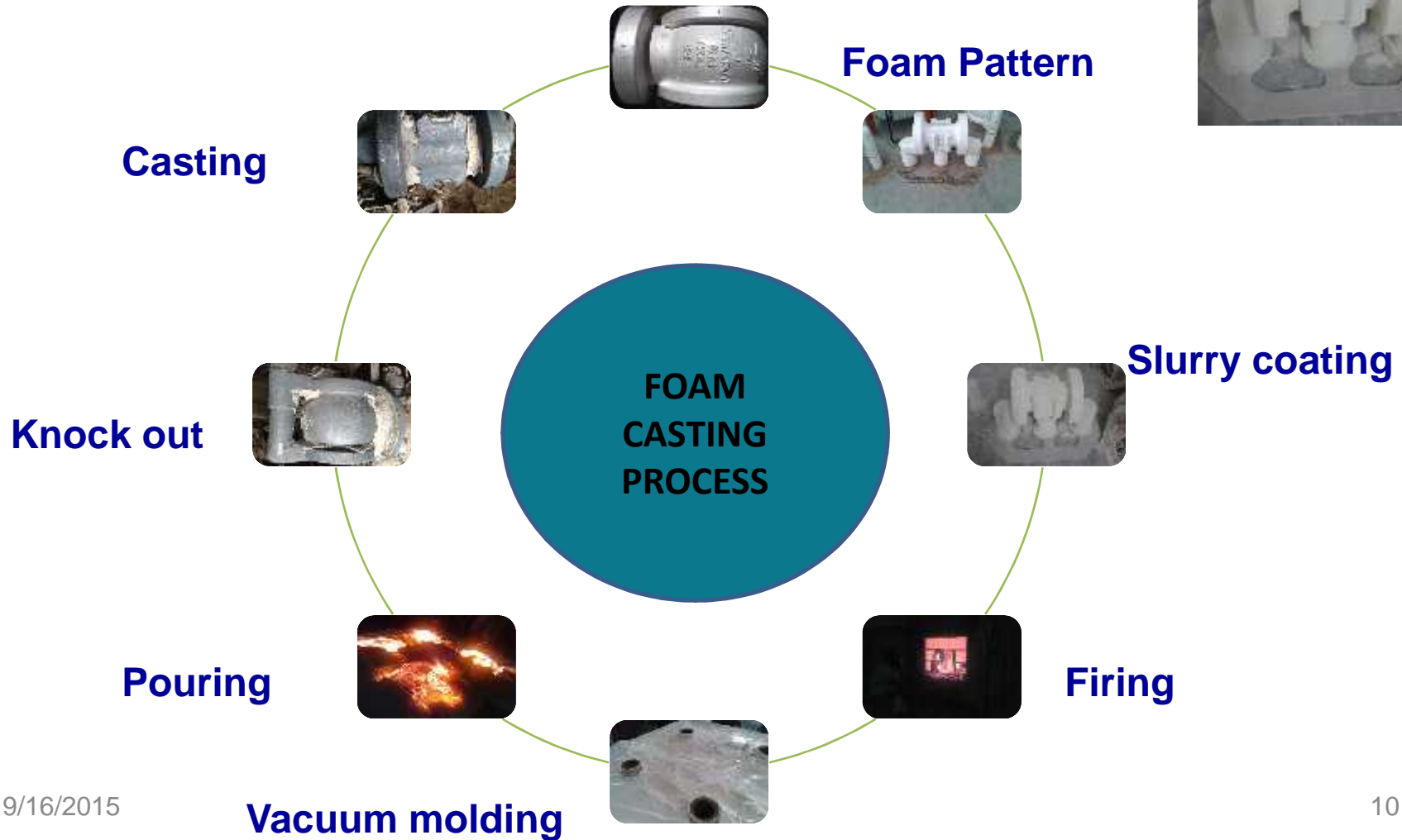
FOUNDRY PROCESS & CAPACITY - FOAM CASTING



MONTHLY CAPACITY :

Installed Capacity : 100 tons/month

Size Range : We can produce components weighing from few grams- 650kg



ADVANTAGES – FOAM CASTING PROCESS

- **Foam casting process can be used for precision castings of ferrous and non-ferrous metals of any size.**
- **Fewer steps are involved in foam cast - lost foam casting process as compared to sand casting.**
- **Core making is eliminated.**
- **Binders or other additives and related mixing processes are eliminated.**
- **High dimensional accuracy can be achieved and thin sections can be cast (i.e. 3 mm).**
- **Since no sand is used. Sand inclusion is completely avoided and 40 % of the defect is eliminated. Reduce the upgrading cost and lowers work-in process. This facilitate on time delivery and achieve the Surface finish nearest to the investment casting.**
- **25% reduction in feed metal and casting per melt can be increased .**
- **Multiple castings can be combined in one mold to increase pouring efficiency.**
- **Consistent casting quality & reduced lead time for finished product.**
- **Fettling and machining is minimized due to high dimensional accuracy and the absence of parting lines or core fins.**



HEAT TREATMENT, FETTLING, ACID PICKLING & PASSIVATION

The Foundry unit have Heat treatment, Fettling, Acid pickling and passivation facility.

The Heat treatment facilities include Oil fired, Electrical & Muffle Electrical Furnaces with water quenching tanks.

The unit have full fledged in-house Fettling shop with Arc cutting , Gas cutting ,grinding & dressing facility – Shot blaster to do finishing operations.

We also have qualified & approved Sub-contractors for Fettling process.



TESTING FACILITIES



In-house Chemical and Mechanical Testing facilities as follows,

- Sand Test,
- Wet analysis,
- PMI,
- SPECTRO analysis,
- Hardness Test,
- Tensile,
- Impact
- Micro Structure analysis,
- MPT,DPT and UT
- Radiographic testing using IR 192 & CB 60



MACHINE SHOP

SAGPL has fully equipped in-house machine shop, Assembly & Testing facility with all the necessary machineries such as ,

**CNC machines,
Conventional Lathes,
Drilling Machines,**

**Hydro Testing Machines,
Ultra Modern Inspection & Testing facilities**

-that ensure the valve casting is completed with the high quality & custom precision.

Painting booth



MACHINE SHOP CAPABILITIES

MACHINING CAPACITY:

MAXIMUM SWING DIAMETER = 3200 MM = 126 INCHES

MAXIMUM SWING HEIGHT = 2500 MM = 98 INCHES

MAXIMUM PCD FOR DRILLING AND TAPPING = 2800 MM = 110 INCHES

MAXIMUM WEIGHT OF THE CASTING CAN BE MACHINED = 20000 Kgs

HYDRO TESTING:

MAXIMUM PRESSURE = 648 Kg/CM² = 9300 PSI

NO RESTRICTION ON THE SIZE OF THE CASTING.



PRODUCTS



SAGPL produces ,

- More intricate,
- Smaller weight,
- High alloy castings that weigh from 1 Kg to 4000 Kgs.

We produce high quality **Valves & Valve Castings in,**

- Exotic Steels,
- Duplex & Super Duplex Steel,
- Stainless Steel, Carbon Steel,
- PH Duplex Steel,
- Low temperature Steel and Low Alloy Steel grades both in Sand casting & Investment casting process.



We design and supply Valves to customer requirement, as we have a dedicated design and Engineering facility with well qualified and highly experienced engineers in addition to software's for modeling and analysis for FEA, Fluid Dynamics and Statics.



STEEL GRADES WE POUR



Exotic Steels - ASTM A 494 A Gr. CZ100 , M35-1, N12MV, N7M, CY40, CW12MW, CW6M. CW6MC, CX2MW, CU5MCuC, CX2M

Duplex Steel and Super Duplex – ASTM A 995 Gr. 4A, 5A, 6A, 1B,

Stainless Steel – ASTM A 351 Gr. CF8M, CF3M, CF8, CF3, CG8M, CG3M, CF8C, CK3MCuN, CN7M, CD4MCu, CD4MCuN, CD3MWCuN

Carbon Steel – ASTM A 216 Gr. WCC, WCB,

Low temperature Steel – ASTM A 352 Gr. LCC, LCB,

Low Alloy Steel - ASTM A 217 Gr. WC6, WC9, CA15, C12, C12A, C5, A 487 CA6NM

PH Duplex Steel – ASTM 747 – CB7Cu-1 (17-4PH)

Aluminum Bronze : ASTM B 148 - C95 200, C95 300, C95 400, C95 410, C95 500, C95 520, C95 600, C95 700, C95 800, C95 820, C95 900

PRODUCT GALLERY



CERTIFICATIONS

Our Quality Management System is certified to a number of national and international standard quality certificates and license are as follows:

ISO 9001-2008

API 6D

PED 97 /23/EC

AD 2000 – MERKBLATT W0

INDIAN BOILER REGULATION 1950

We are also certified by,

LLYOD'S,

BV,

DNV ,

NORSOK



These certifications ensure a high level of accountability, quality control, as well as constant upgrading of our systems.



SAGPL – PLEDGE



- The **Safety of People.**
- The **Protection of the Environment.**
- The **Assurance of Speed and the Control of your cost.**
- The **Quality of our Service.**
- The **Success of your Project.**





Closing comments!

Providing high quality steel castings using latest technologies our customers have come to know and trust over the last 2 decades, SAGPL continually strives to provide The best Quality, Service, and Customer Delight in the industry.

From the moment your order is taken to the time it leaves our shipping dock, your Delight is paramount. SAGPL is committed to Delight its customers' needs and expectations in Quality, Delivery, and Service.

SAGPL TEAM



Thank You TEAM SAGPL